



EAGLE HARBOR Living

Your guide to the good life

INSIDE

CDD News

Directory

Calendar

Bingo Night

Golf News

PAGE 4

PAGE 6

PAGE 8

PAGE 12

PAGE 33

NOVEMBER 2015 • VOLUME 7 • ISSUE 11



Semi-Annual Fall Sidewalk Sale!!

More Information, Page 22

**55+ Club's
Christmas
Party**

Page 32

**Eagle Harbor
Tennis Club
Championship**

Page 10





The Crossings at Fleming Island Community Development District

Summary of August 13th and August 27th, 2015 Board of Supervisors Meetings

CDD BOARD SUPERVISORS AND MANAGEMENT TEAM

- David Herold — Chairman — dmheroldcddseat4@aol.com
- John Tabor — Vice Chairman — jtaborcdd@comcast.net
- Mary Michaels — Supervisor — memichaelscddseat1@gmail.com
- Suzanne Janolino — Supervisor — sfjanolino@gmail.com
- Robb Rush — Supervisor — rushrobb@bellsouth.net
- David deNagy — District Manager — ddenagy@gmsnf.com (904) 940-5850
- Steve Andersen — District Operations Manager — sandersen@gmsnf.com (904) 509-6445
- Sam Garrison — District Counsel — sam@claylawyers.com (904) 269-1111

ONGOING COMMUNITY INFORMATION

Community Improvements – Golf Course Greens: The massive golf course renovation project is complete with outstanding results. All 20 golf course and practice greens were renovated with the industries' best grass. The practice facility was improved and many on-course improvements were completed, all within budget and on time.

Not only has the course been improved but there is also a new management team that will ensure your experience at Eagle Harbor is outstanding.

For your safety, everyone is reminded the cart paths and course are only for registered golfers and the use of the cart path for walking and riding bikes is dangerous and therefore prohibited.

Community Improvements – Eagle Harbor Restaurant and Bar: The restaurant and bar renovations are underway and a reopening of the restaurant and bar is slated for sometime in November. Look for more information about the new restaurant and bar at the eagleharboronline.com website.

The Board of Supervisors, at the August 13, 2015 CDD meeting, motioned to retain the name "Talons" for the soon to be newly renovated restaurant/bar/community center. More information about the new facility, menu items and events will be posted.

Lake Maintenance: The Board of Supervisors, at the September 10, 2015 CDD meeting, adopted the fiscal year 2016 operating, capital reserve, debt service, water/sewer, golf and swim/tennis budgets. The FY16 Operations assessment will remain at \$523.40 (the Operations assessment has been \$523.40 since October 1, 2008). A copy of the FY16 budget can be found online at www.eagleharboronline.com.

Clay County Sheriff's Office: Residents — if you have not registered your home alarm with Clay County, please contact the Clay County Building Division (904) 284-6307 for information about how to register your alarm. A copy of the most recent Eagle Harbor Crime Statistics can be found at the Eagle Harbor Online website in the February 26, 2015 Crossings CDD meeting agenda.

OPERATION OF GOLF CARTS AND LOW-SPEED VEHICLES IN EAGLE HARBOR

Eagle Harbor is one of the few communities in Clay County that are fortunate enough to be approved for Golf Cart use on the roads of our community. While this is one of several wonderful amenities that we enjoy, it is very important that laws that govern the use of golf carts be followed in order to maintain resident safety. Many of the laws can be found in Florida Statute 316.212.

A common misperception of a Golf Cart is that due to its low speed, it is a relatively safe vehicle. However, when operated outside of the laws, it can present hazardous conditions that may result in serious injury. There are approximately 13,000 Golf Cart related accidents per year that require emergency room visits. Approximately 40% of those accidents involve children under the age of 16 and half of those are due to a fall from a moving cart. It is also very important to be cautious when turning left in a Golf Cart as this is when the vast majority of Golf Cart accidents take place.

Some of the laws relating to golf cart use found in FS 316.212 are as follows:

- 1.) A Golf Cart cannot exceed 20 miles per hour.
- 2.) Golf Carts can only be operated on designated roads where the speed limit is 30 miles per hour or less.
- 3.) Drivers must be 14 years or older.
- 4.) Golf Carts can only be operated from sunrise to sunset.
- 5.) Golf Carts cannot be driven on any sidewalks.
- 6.) Golf Carts must be equipped with sufficient brakes, reliable steering apparatus, safe tires, a rearview mirror, and red reflector warning devices on

both the front and rear.

- 7.) Operators can be arrested for DUI on a Golf Cart.
 - 8.) Operators can receive a citation against their driver's license (or future driver's license) for violation of Florida Statute 316.212.
- If your golf cart goes more than 20 miles per hour, it is no longer classified as a "Golf Cart," but is classified as a "Low Speed Vehicle (LSV)". According to Florida State Statutes, Low Speed Vehicles operate under a different set of rules than do Golf Carts. For Example:
- 1.) Any person operating a Low Speed Vehicle must have in his or her possession a valid driver's license.
 - 2.) Low Speed Vehicles must be equipped with head lamps, stop lamps, turn signal lamps, tail lamps, reflex reflectors, parking brakes, rearview mirrors, windshields, seat belts, and vehicle identification numbers.
 - 3.) Low Speed Vehicles must be registered and insured.
 - 4.) Low Speed Vehicles may not exceed 25 miles per hour.
 - 5.) Low Speed Vehicles can only be operated on designated roads with posted speed limits of 35 miles per hour or less.
 - 6.) Low Speed Vehicles cannot be driven on any sidewalks.
 - 7.) Operators can be arrested for DUI on a Low Speed Vehicle.
 - 8.) Operators can receive a citation against their driver's license for violation of Florida Statute 316.2122.

In addition to the Golf Cart and LSV Florida laws, the CDD requires that all Golf Carts and Low Speed Vehicles register with Eagle Harbor prior to operating on District property. Registration is free and can be done by making an appointment at (904) 621-8362 or by email at ssanci@hamptongolfclubs.com. Upon completing your registration, you will receive two number decals to adhere to the front and back of your vehicle. Low Speed Vehicles will receive different color decals. A copy of your current Eagle Harbor registration must always be on file. Failure to register may result in suspension of user privileges of the facilities and amenities.

Thank you for your time and effort as we continue to improve the best community in Florida.

MINUTES

The approved meeting minutes can be found at the online website. *For more information regarding the Board meetings, please visit the Eagle Harbor website at www.eagleharboronline.com.

EXPANDING RECYCLING PROGRAM

Clay County is expanding our recycling program to accept more items, effective immediately! NEW items that are included in the recycling program:

- CD's and CD Cases
- Milk/creamer cartons
- Soup and broth cartons
- Juice boxes
- Baking tins

Items NOT included in Recycling Program: Plastic toys, plastic bags, clothes hangers, pizza boxes, motor oil containers, pool and other chemical containers, mirrors, window glass and broken glass, aerosol cans, electronics and pesticide containers.

Clay County residents are encouraged to recycle. Recycling conserves natural resources and helps lower the cost of waste disposal. All containers should be emptied and rinsed clean. Place all recyclable materials in bins provided. Do not place anything but recyclables in bins. Please place recycle bins curbside by 6 a.m. on service day.

Contact information:
Advanced Disposal | www.advanceddisposal.com | 904.695.0500 or 1-866-779-CLAY

Clay County | www.claycounty.gov | 904.284.6374 or 904.269.6374
More on Recycling, Page 36

FROM THE CLAY COUNTY SHERIFF'S OFFICE

We are asking the public to remember if you "Like IT Lock It." Keep your garage doors closed if you are not working in the front yard. Lock your car doors and do not leave valuables in plain view. When going to the gym place your valuables in a secure locker. At the tennis court bring a gym bag to put your valuables in and then place the bag near the net so it is not out of your sight. Criminals have been known to watch the parking lot near gyms and tennis courts. Contact the Clay County Sheriff's Office at 264-6512 if you see anything suspicious.

Upcoming CDD Meetings

November Meeting

Thursday, November 19, 2015 at 6 p.m.
Former Sales Center, 1880 Eagle Harbor Pkwy
Fleming Island, FL 32003

November Board Meeting

Thursday, December 17, 2015 at 6 p.m.
Former Sales Center, 1880 Eagle Harbor Pkwy
Fleming Island, FL 32003



EAGLE HARBOR DIRECTORY

For the most up-to-date Eagle Harbor contact information, please visit the website at www.EagleHarborOnline.com

General Manager

Ryan Parr rparr@hamptongolfclubs.com

Pool Facilities

Swim Park.....264-8989
Creekside Park.....637-0035
Waterfront Park.....621-8362

Recreation & Aquatics Director

Janet Lees jlees@hamptongolfclubs.com.....621-8363

Recreation & Aquatics Assistant Director

Cori Kirk ckirk@hamptongolfclubs.com.....621-8363

Tennis Park, Director of Tennis

Josh Vissman jvissman@hamptongolfclubs.com...269-2500

Talons & Events

Kristina Whittman/Jennifer Covington.....269-9300

Golf Membership & Reservations

Ryan Parr/Marshall Collins.....269-9300

Resident/Member Services, Boat & RV Storage,

Party Rentals & Golf Cart Registrations

Waterfront Park.....621-8362

Website & Newsletter

Erica Brockway
ebrockway@hamptongolfclubs.com.....564-9129

Golf Maintenance

Doug Hill dhill@hamptongolfclubs.com.....264-8199

Landscape Maintenance

Jim Proctor treeamigos1@bellsouth.net.....778-1030
To report vandalism and graffiti, e-mail or call Jim Proctor.

Pond & Lake Maintenance

GMS sandersen@govmgtsv.com.....509-6445

DISTRICT MANAGERS

Governmental Management Services (GMS).....940-5850

HOMEOWNERS' ASSOCIATIONS

Eagle Harbor HOA (North of Hwy 220 and West of Hwy 17)

Theresa Graeser
tgraeser@paracleservicesllc.com.....278-0616

Black Creek HOA

Theresa Graeser
tgraeser@paracleservicesllc.com.....278-0616

Cobblestone HOA

Tiffany Clark tclark@kwpropertymanagement.com.....215-1493

Enclave HOA

Dee Belet debelet@lelandmanagement.com.....223-7224

Pine Lake Townhome HOA

ReMax Specialists pinelakecam@comcast.net.....278-2338

Stone Creek HOA

Jennifer Presson, CMCA jpresson@cmcjaxfla.com448-3634

Town Center/East of 17 HOA

Dee Belet debelet@lelandmanagement.com.....223-7224

HELPFUL PHONE NUMBERS FOR EAGLE HARBOR RESIDENTS

Clay County Animal Control.....269-6342
Clay County Sheriff's Department.....264-6512

Publication Policy



The function of Eagle Harbor Living is to serve the entire Eagle Harbor development.

Priority will be given to reporting news and activities in Eagle Harbor including golf, tennis, recreation, clubhouse events, CDD and other news and events that directly affect the residents of Eagle Harbor.

Eagle Harbor Living's acceptance of advertising does not constitute an endorsement or approval of any product or services by the publisher, Eagle Harbor Community Development District or Hampton Golf. The publisher reserves the right to refuse advertising that does not meet the standards of the publication.

The publisher of Eagle Harbor Living agrees to indemnify and hold harmless Eagle Harbor residents, Eagle Harbor Community Development District or Hampton Golf from any claims asserted against or financial liabilities incurred by them arising from commercial content of this publication or anything contained in any advertising copy, including without limitation any claims of whatever nature asserted by advertisers or potential advertisers.

Eagle Harbor Living is published for residents of Eagle Harbor. Eagle Harbor Living is a product of The Florida Times-Union.

ABOUT THIS NEWSLETTER

Eagle Harbor Living Editor:

Erica Brockway
ebrockway@hamptongolfclubs.com
(904) 564-9129

Advertising Sales:

wecanhelp@jacksonville.com
904-438-3950

Living Program Manager:

Joe DeSalvo
joe.desalvo@jacksonville.com
(904) 359-4366

Delivery Inquiries:

Trish Webb
trish.webb@jacksonville.com
(904) 359-4208

Stories/Photography: Send your articles and/or high-resolution jpegs to Erica Brockway at ebrockway@hamptongolfclubs.com. Microsoft Word documents must be saved as ".doc" files. Please do not use the "e-mail" function offered through photo software or Web sites when sending photos. Use of submitted material is at the editor's discretion.

December 2015 Issue Deadlines:

Editorial (stories and photographs):

Monday, November 2nd

Advertising (space reservation):

Wednesday, November 4th



EAGLE HARBOR CALENDAR OF EVENTS

NOVEMBER 2015

Sunday	Monday	Tuesday	Wednesday	Thursday	Friday	Saturday
1	2 Lap Swim Country Club A1 Team Practice Country Club A2 Team Practice Country Club B1 Team Practice Country Club B2 Team Practice Junior Intermediate Clinic Developmental Clinic	3 Yoga Country Club C1 Team Practice Working Women C1 Team Practice Country Club D Team Practice Working Women B2 Team Practice Junior Team Tennis Clinic	4 Lap Swim Boot Camp Men's Bridge Junior Intermediate Clinic Developmental Clinic Men's Big Hitters Men's Night	5 Yoga Junior Team Tennis Clinic One Steppers	6 Lap Swim Boot Camp Ladies' Bridge Northeast Florida Hospice Tournament	7 Boot Camp
8	9 Waterfront Park will be closed for monthly maintenance Country Club A1 Team Practice Country Club A2 Team Practice Country Club B1 Team Practice Country Club B2 Team Practice Junior Intermediate Clinic Developmental Clinic Black Creek ARC Meeting	10 Yoga Country Club C1 Team Practice Working Women C1 Team Practice Country Club D Team Practice Working Women B2 Team Practice Junior Team Tennis Clinic EHA HOA Meeting	11 Lap Swim Boot Camp Men's Bridge Junior Intermediate Clinic Developmental Clinic Men's Big Hitters Men's Night	12 Yoga Junior Team Tennis Clinic One Steppers	13 Lap Swim Boot Camp Ladies' Bridge	14 Boot Camp EH Annual HOA Meeting
15	16 Country Club A1 Team Practice Country Club A2 Team Practice Country Club B1 Team Practice Country Club B2 Team Practice Junior Intermediate Clinic Developmental Clinic	17 Yoga Country Club C1 Team Practice Working Women C1 Team Practice Country Club D Team Practice Working Women B2 Team Practice Junior Team Tennis Clinic EH HOA Meeting	18 Lap Swim Boot Camp Men's Bridge Junior Intermediate Clinic Developmental Clinic Men's Big Hitters Men's Night	19 Yoga Junior Team Tennis Clinic One Steppers CDD Meeting	20 Lap Swim Boot Camp Ladies' Bridge Mom & Tot Social Stroll	21 Boot Camp - Crossfit Style Workout Team Shamble
22	23 Country Club A1 Team Practice Country Club A2 Team Practice Country Club B1 Team Practice Country Club B2 Team Practice Junior Intermediate Clinic Developmental Clinic	24 Yoga Country Club C1 Team Practice Working Women C1 Team Practice Country Club D Team Practice Working Women B2 Team Practice Junior Team Tennis Clinic	25 Boot Camp Men's Bridge Junior Intermediate Clinic Developmental Clinic Men's Big Hitters Men's Night	26 Yoga Junior Team Tennis Clinic One Steppers	27 Boot Camp Ladies' Bridge	28 Boot Camp - Crossfit Style Workout
29	30 Country Club A1 Team Practice Country Club A2 Team Practice Country Club B1 Team Practice Country Club B2 Team Practice Junior Intermediate Clinic Developmental Clinic					

Community Website www.EagleHarborOnline.com
 Community Concerns 940-5850
 Waterfront Park 621-8362
 Tennis Park 269-2500
 Golf Pro Shop/Tee Times 269-9300
 Talons Restaurant/Bar 269-1953

- Black Type - Community Event
- Red Type - Tennis Event
- Green Type - Golf Event
- Blue Type - Event at the pools

DECEMBER 2015

Sunday	Monday	Tuesday	Wednesday	Thursday	Friday	Saturday
		1 Yoga Country Club C1 Team Practice Working Women C1 Team Practice Country Club D Team Practice Working Women B2 Team Practice Junior Team Tennis Clinic	2 Boot Camp Men's Bridge Junior Intermediate Clinic Developmental Clinic Men's Big Hitters Men's Night	3 Yoga Junior Team Tennis Clinic One Steppers	4 Boot Camp Ladies' Bridge	5 Boot Camp - Crossfit Style Workout
6	7 Boot Camp Country Club A1 Team Practice Country Club A2 Team Practice Country Club B1 Team Practice Country Club B2 Team Practice Junior Intermediate Clinic Developmental Clinic	8 Yoga Country Club C1 Team Practice Working Women C1 Team Practice Country Club D Team Practice Working Women B2 Team Practice Junior Team Tennis Clinic	9 Boot Camp Men's Bridge Junior Intermediate Clinic Developmental Clinic Men's Big Hitters Men's Night	10 Yoga One Steppers Junior Team Tennis Clinic	11 Boot Camp Ladies' Bridge	12 Boot Camp - Crossfit Style Workout



Monday Night Seniors' Mixed Doubles Tennis

All levels are welcome!
Mondays from 6:30-8 p.m.

Men's Clinics

Men's night is Wednesday nights from 6:30 - 7:30 p.m. This is for your beginner to intermediate player, normally a USTA 3.0-3.5 rated player. It is one hour of clinic and then round-robin afterwards. This is a great way to get out, meet players and get involved in the program.

Big Hitters clinic is also on Wednesday nights from 6:30- 8 p.m. This is our more advanced men's clinic. This clinic caters to players with a USTA rating of 4.0 or higher. Call the pro shop for more details or help getting started!

New to Tennis?

If you are interested in getting started playing tennis but don't know where to begin, please contact the Tennis Shop at 269-2500 and one of our staff members will be happy to assist you.

Court Maintenance and Hours

The courts will be closed during the middle of the day for maintenance on a daily basis. We appreciate your understanding that the courts must close on a daily basis in order to protect the value of CDD assets and keep the courts in the condition tennis players expect. With the amount of play our courts receive it is a tremendous challenge and effort to keep the courts in good condition. The courts will close nightly at 9:45 p.m.

Evening maintenance staff has a limited amount of time to perform maintenance and thus all courts must be vacated by 9:45 p.m. Thank you for your understanding and cooperation.



Eagle Harbor Club Championship (November 6-8th)

This is going to be a memorable event that is run over 3 days with a fantastic player party on Saturday night at the new clubhouse!! Even if you are not playing come on out to see the fun and festivities!

Tennis Tip

By Josh Vissman, USPTA

Do you feel like you are good at anticipating the next shot? This is arguably the most important aspect of movement and certainly the biggest way most people can improve movement without making drastic physical changes. Very few people are quick enough on their feet to be able to read and react and still be prepared enough to execute the next shot consistently. As one's playing level improves it becomes increasingly difficult to play read and react tennis. This is why it is very common for club players to go from offense on one shot to defense on the next shot.

First, let's be clear what anticipation is. Anticipation is not a physical trait or a natural skill. Anticipation is a

learned tennis skill. Anticipation is the combination of understanding the geometry of the court combined with analyzing your opponent's preparation and racquet cues. Is your opponent balanced? Is your opponent's racquet prepared? How is your opponent's racquet prepared? Is your opponent set or is your opponent moving? What is your opponent's court location? Taking it a level further, can you determine the answers to these questions, in relation to your opponent's next shot, before you even hit the ball? How about two shots ahead of time?

Consult your Eagle Harbor tennis professional if you would like to learn more about improving your anticipation.

Fall Junior Team Tennis

Team Tennis practice is for juniors ages 12 - 18 and is in full swing on Tuesday and Thursday 4:30 to 6:30pm. This practice is for intermediate and advanced players at a cost of \$20 per clinic.

Junior Developmental Clinics

For juniors ages 7-10 we have our Developmental clinic from 4:30-5:30pm on Mondays and Wednesdays. This is a great way to introduce your children to tennis. It is a fun, educational clinic that teaches them the game, eye hand coordination and of course how to have fun playing. We also have our junior intermediate clinic from 5:30-6:30 on Monday and Wednesday which focus more on stroke production and rallying.



Hopefully there are some budding tennis players out there that will want to pursue the game more than just on a clinic basis. For those interested, there are Grand Prix playing opportunities in 2015. This is a chance for junior players to be introduced to playing tennis and competing, although competing is a loose connotation (think T-ball where the idea is to have fun and build skills).

You can find the dates for these events at www.firstcoasttennis.com



CLUBHOUSE



EAGLE HARBOR BINGO NITE



November 10 at Talons Restaurant

2217 Eagle Harbor Parkway | Fleming Island, FL 32003



Registration 5:30-6PM
Buffet Dinner 6-7PM
Bingo 7-9PM



RSVP: 284-9859

Cost: \$25/\$15 to Challenge Enterprises

ABOUT CHALLENGE ENTERPRISES: Challenge Enterprises is a 501 (c) 3 non-profit that provides a wide range of programs to promote the Power of People and Possibilities for individuals living with disabilities. From preschool through retirement, Challenge Enterprises provides services to help individuals live a productive, active and rewarding life. www.challengeenterprises.org





Regular Hours of Operation

All pool operating hours are subject to change based on weather conditions. Please refer to EagleHarborOnline.com for the most up-to-date information

Creekside Park

Creekside is closed for the Fall/Winter Season. Facility is still available for party rentals. Please contact Waterfront Park at 904-621-8362 for more information

Park is closed for maintenance. Last day of Lap Swim will be Friday, November, 20th. Lap Swim will resume after Spring Break. **Please note: There will be no lap swim in the event of inclement weather or if the outside temperature is 45 degrees or below. Once all three pools are consistently below 80 degrees children will be permitted in the heated adult pool. However, children are not permitted in the therapeutic jet area of the heated pool. Please check with guest services to confirm when admittance is allowed**

Waterfront Park

Monday – Saturday: 10 a.m.- 7 p.m.
Sunday: 11 a.m. - 7 p.m.

*Waterfront Park will be closed for monthly maintenance on Monday, November 9th. Waterfront Park will be closed on Thursday, November 26th (Thanksgiving Day).

Lap Swim

Mondays, Wednesdays & Fridays: 6 - 7:15 a.m.
Waterfront Park.

Lap Swim will be cancelled on November 9th since Waterfront

Swim Park

Swim Park is closed for the Fall/Winter Season

Eagle Harbor Docks

Open from dawn until dusk daily. Docks are for residents and their guests only! There is no swimming off the docks and boats may not be parked overnight unless a mechanical issue exists.





Save the date!

Third Annual Holiday Light Parade, Gingerbread House Competition & Tree Lighting Ceremony

Saturday December 12th | Clubhouse | Events Starting between 6-7p.m

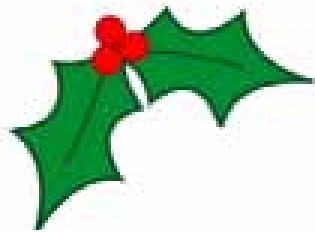
Save the date, it's almost time! Join us for Annual Holiday Light Parade, Gingerbread house competition and Tree Lighting Ceremony featuring a Meet and Greet with Santa Claus!
More information to come in the December Edition of Eagle Harbor Living

Angel Tree 2015- Benefiting Children from Kids First of Florida

Starting December 1st | Clubhouse

Start your season off right by making the holiday season extra bright for a local child. Starting Monday, December 1, stop by the Golf Club and pick an angel off of the Angel Tree. The Angel Tree benefits local boys and girls from Kids First of Florida- an organization that fosters more than 500 children that have been removed from abusive homes in Clay and Baker counties. After shopping, please bring your gifts back to the Golf Club wrapped, in their original package and with the Angel's original wish list attached.

Due Date to come in the December Edition of Eagle Harbor Living



55+ Club Presents Christmas Party 2015

This is a Christmas party you do not want to miss!
Come and see the newly renovated Clubhouse and Talons Restaurant!

December 10 | 6:00 p.m.

Member Tickets: \$46.78 per person

(Price includes food and one drink per person.)

Live Music | Cash bar with Happy Hour Prices

Heavy Hur D'ourves | Desserts

Holiday Attire Required: Gentlemen must wear jackets.

Deadline for purchasing tickets, December 3, 2015.

Want to join the 55+ Club?

Contact us to sign up!

**Merry
Christmas**



LET'S HAVE A PARTY, EVEN DURING THE FALL & WINTER SEASON!

Come have a party at one of our facilities! Even though the water may be too cool to swim in you can still host a cabana party. Waterfront cabanas, Creekside Lanai and our indoor Swim Park Annex building are available in three-hour increments during operating hours and accommodate up to 40 -60 plus people depending on the facility you choose.

Reservations are required two weeks in advance so we can best accommodate your request and plan appropriate staffing levels. Party bookings are not accepted on holidays or holiday.

For more information or to book a rental, contact Waterfront Park at 904-621-8362.

.....



Semi-Annual Fall Sidewalk Sale!

Saturday, November 14th | 7 a.m. -11 a.m. | Fleming Island Elementary School |\$25 per table

It's time to dig into your closets and clean out the garage! Eagle Harbor residents will be lining the sidewalks with great bargains at the Fall Sidewalk Sale! Eager shoppers can find great deals on clothing, toys, tools, furniture, books, movies, CDs, jewelry and much more! Tables sell quickly so be sure to register early.

A maximum of two tables are permitted per resident and tables are \$25 each. Residents may pick up a map from Waterfront Park on Friday, November 13th by 5 p.m. and visit Fleming Island Elementary that evening after 5 p.m. to determine the location of the designated area.

Setup for the Sidewalk Sale will begin bright and early at 6 a.m. and all vehicles must be moved to a designated parking space by 7 a.m. in order for shoppers to safely walk and shop. All residents are responsible for the removal of all unsold items and trash following the sale. Quigley House will be on hand to collect any donations.

For additional information and to register for a table with payment, please contact Waterfront Park at 904-621-8362 before Wednesday November 10



Fall Craft: Silly Stick Scarecrows!

Monday, November 23rd | Swim Park: Annex Building | Begins at 12 p.m. | Ages: 3-8 | \$5 per child

School's out and Thanksgiving is right around the corner! What better way to prepare than to add a touch of homemade art to your home! Whether you show them off to your friends, or use them as your place setting labeled with your name, this silly scarecrow is bound to bring a smile to the table. Join us and personalize your very own Silly Stick Scarecrow. Fee includes tutorial, all items to make craft, snack and drink, and games to play while crafts are settling!

RSVP with payment to Waterfront Park at 904-621-8362 by Saturday, November 21st

Mom & Tot Social Stroll

Friday, November 20th | Waterfront Park | 10-11 a.m. | Complimentary

As new parents, we know how hard it can be to get out and socialize with your little one. We want to allot a special time for exactly that! There are key elements to this unique experience. We want to help bring Eagle Harbor parents together to make new parent and tot friendships with your neighbors. This gives you the opportunity to exchange support, advice and most importantly laughs! During this quality time your little ones will also have the chance to learn, explore, and socialize through the art of play.

We want to be mindful of the temperature and we want to transition the "poolside" Mom & Tot Social to a stroll through the neighborhood. We want to continue to connect with other parents throughout the fall and winter season

Please RSVP to Waterfront Park at (904) 621-8362.



COMMUNITY CENTER RENOVATIONS UPDATE

Talons Restaurant and Bar is expected to open early this month! Please stop by and look over our newly created menu and cocktail menu. In addition, Talons ToGo will be available for takeout.

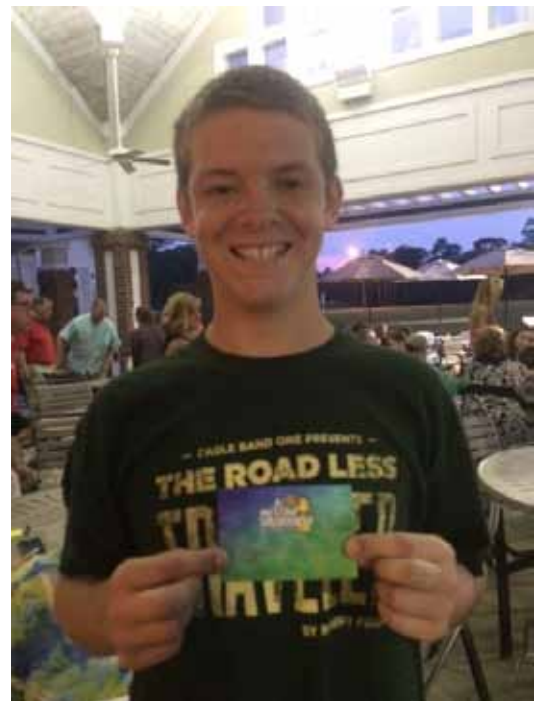
Consider Talons for your next event or gathering! Catering is available.

Contact Kristina Wittmann, Food and Beverage Director for more details. (904) 269-9300 or by email at kwittmann@hamptongolfclubs.com.

Talons



Our Beer, Wings & Trivia event was a blast!



Like Us on Facebook!

Like us on Facebook and get the latest updated on activities and community events!
www.facebook.com/eagleharborclub

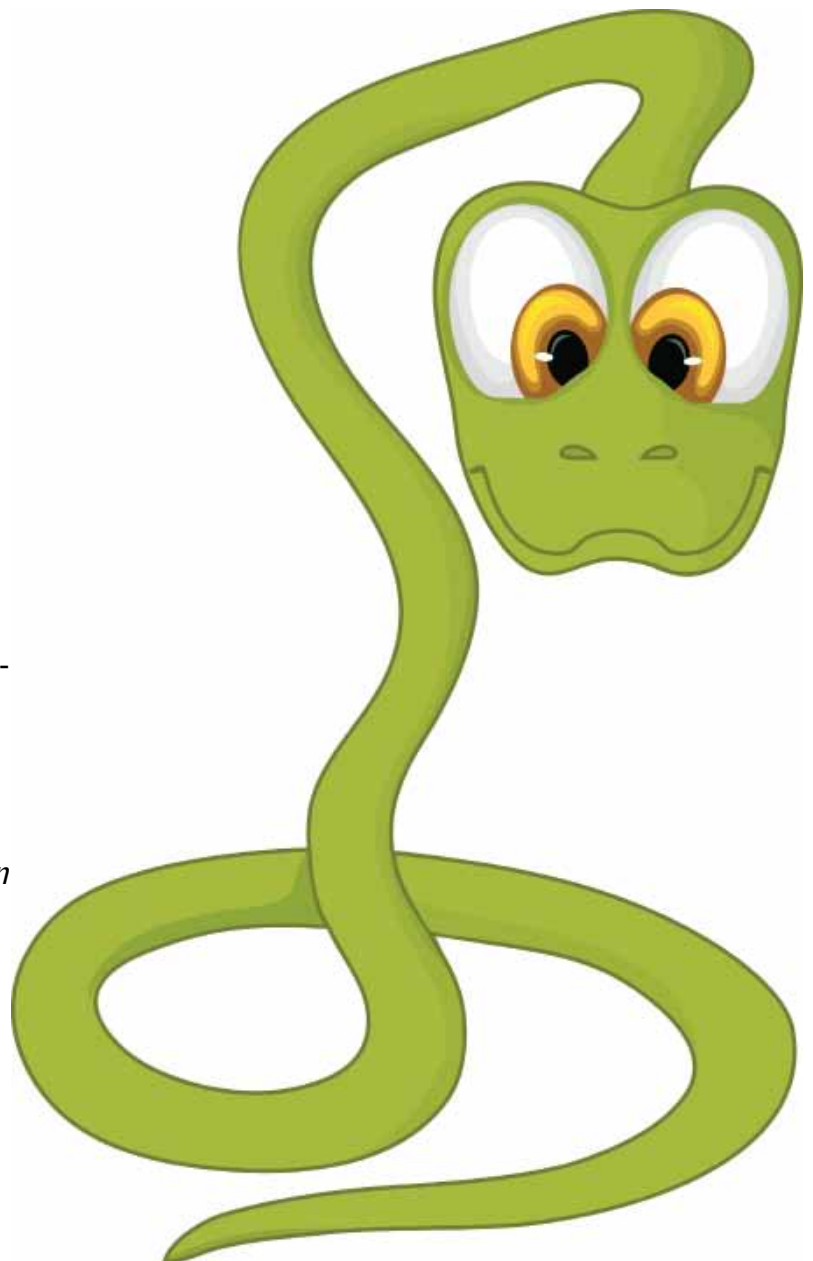


Wild Wonders Animal Show!!!

**Sunday, November 8th | 2 - 3 p.m. |
Swim Park: Annex | Ages: 4 & up
\$15 per child**

Do you love reptiles? If so, the Wild Wonders Animal Show from Middleburg, Florida is perfect for you! The Wild Wonders staff will be at the Annex again on Sunday, November 9 with a live animal show featuring a variety of species including snakes, alligators & more! This interactive event referred to as "Animal Adventures" will allow participants to pet/hold some of the animals if they wish!

Limited spots are available so please RSVP to Waterfront Park at 904-621-8362 no later than Thursday, November 5th





We're OPPENNNN!

The golf course is open and the tee sheet is filling fast. Residents and Patrons, come on out and see YOUR new golf course. Renovations include new greens, bunkers, cart paths, the new bulkhead on #9 and all new course supplies! Please contact Ryan Parr, General Manager, with any questions or for information about membership opportunities.
RParr@hamptongolfclubs.com



2015 EAGLE HARBOR GOLF CLUB TOURNAMENT SCHEDULE

- November 6** Northeast Florida Hospice Tournament | Club & Association Event
November 21 Team Shamble | Association Event
December 4 Ladies Invitational
December 5 Grand Final | Association Event

TOURNAMENT ELIGIBILITY

- Association Event - Participants must be a member of the Eagle Harbor Golf Association
 - Patron Event- Participants must Save the Date: Club Championship
 - Club Event - Open to everyone, both patrons and non-patrons
- *Applicable fees will apply to Senior Patrons participating in all club and association events.



2015 Association Tournament Schedule

November 6
November 21
December 5

Northeast Florida Hospice Tournament
Team Shamble
Grand Final



EAGLE HARBOR ASSOCIATION



Office Hours: 9:00 a.m. – 3:00 p.m. Tuesday, Wednesday & Thursday
2105 Harbor Lake Drive, Fleming Island FL 32003
904-278-0616

ANNUAL EAGLE HARBOR ASSOCIATION MEMBERS' MEETING & ELECTION OF DIRECTORS

10:00 A.M.

Saturday, November 14, 2015

at

**Sleep Inn Banquet Room
1815 East West Parkway, Fleming Island FL 32003**

This meeting is for all Eagle Harbor residential and commercial owners located North of Highway 220 and West of Highway 17, as well as all Enclave owners.

All members of the Eagle Harbor Association (EHA) are encouraged to attend and should have already received the First Notice of the Annual Meeting, which was mailed out September 17, 2015 and included a Nomination Form if you wanted to be considered for the 2015 board of directors. All Nomination Forms will be considered.

The Second Notice of Meeting, mailed October 23, 2015 included the following:

- ITEM SPECIFIC AGENDA
- PROPOSED 2016 BUDGET
- NOMINEE BIOS
- ABSENTEE BALLOT
- PROXY
- VOTING AUTHORIZATION

All EHA members, in good standing with the association, will be eligible to vote and to elect board members, provided a quorum of the membership is present. Should a member not be in good standing, meaning you have an outstanding balance with the association, we encourage you to bring your account current prior to the meeting date as all members not in good standing are ineligible to vote or be counted toward the quorum requirement.

We hope everyone will be able to attend. However, should you not be able to attend the meeting we ask that you mail in your PROXY so that a quorum may be achieved and the business of the association can be conducted.



EAGLE HARBOR ASSOCIATION



Absentee Homeowners

Many Florida residents enjoy a "snowbird" lifestyle, living in their Florida homes during winter months and retreating to cooler temperatures up north during hot Florida summers. It can be the best of both worlds until problems come up and the homeowner can't be located. How unfortunate to return to the tropical charms of Florida only to discover that there may be unpaid assessments and/or fines on the property because the association did not have a current mailing address and/or contact information on file. If you are a part-time Eagle Harbor resident or are renting your Eagle Harbor home it's important to keep your mailing address current. Please call 904-278-0616 or email tgraeser@paracleteservicesllc.com to ensure your mailing address and contact information is current with the association.

EHA, INC Architectural Review Committee Meeting

EH ARC: Tuesday, November 10th at 5:30 p.m. at the EH Swim Park Annex, 1880 Eagle Harbor Parkway, Fleming Island, FL 32003

EHA, INC Homeowners' Association (HOA) Meeting

EH HOA: Saturday, November 14th at 10:00 a.m. @ Sleep Inn, 1815 East West Parkway, Fleming Island, FL32003
More HOA and ARC information can be found on the Eagle Harbor website at www.EagleHarborOnline.com.

Ask Eagle Harbor Homeowners Association = askEagleHarborHOA

If you have a question, ask it and get an answer here directly from your EHA board members...
askEagleHarborHOA@gmail.com
Ask us how we can help you and your community...



BLACK CREEK ASSOCIATION

Pressure Washing

Many exterior areas of your home could benefit greatly from annual pressure washing. Whether you are cleaning concrete, brick, pavers, or stucco the surface is porous and gets dirty easily. Your driveway, mailbox post, air conditioning screen wall, and the exterior of your home can all get dirty and/or accumulate mildew over time so you want to clean them on a regular basis. Usually, an annual pressure washing will do the trick.



Pressure washing machines are a quick and easy way to get the results you are looking for. These machines spray a high volume of water at a high pressure (some even at a high temperature) in order to expedite cleaning.

You can hire someone to perform the work for you OR you can rent a pressure washing machine at Home Depot or Lowes. If you choose to go it alone remember to always read and abide by the manufacturer instructions.

2016 Black Creek Annual Association Member Assessment

BLACK CREEK at Eagle Harbor Association, Inc. Member Statements will be mailed out December 28th. The Annual \$120.00 Member Assessment is due no later than January 31st. Please be on the lookout for your statement as payments received after January 31st will be assessed a late fee and interest as outlined in the community documents.

Also, please contact our office, (904-278-0616) should you have had a recent change to your mailing address or have any questions related to your statement. Your Association Board of Directors thanks you for your cooperation and prompt payment.

BLACK CREEK HOA Upcoming Meeting Dates:

HOA: Tuesday, January 19th, 2016 at 6:30 p.m. at the CDD

Office, 2105 Harbor Lake Drive

Black Creek HOA 2016 Schedule of Meetings:

Meetings will be held the 3rd Tuesday of the following months at 6:30PM at 2105 Harbor Lake Drive unless otherwise noted.

- JAN 19
- APRIL 19
- MAY 17
- AUG 16
- SEPT 20 - Budget
- OCT 18 - Annual Meeting & Board Meeting @1880 Eagle Harbor Parkway

BLACK CREEK ARC

Upcoming Meeting Dates:

ARC: Monday, November 9th at 4 p.m. at the CDD Office, 2105 Harbor Lake Drive

Black Creek ARC 2016 Schedule of Meetings:

- JAN 11
- FEB 08
- MAR 14
- APR 11
- MAY 09
- JUN 13
- JUL 11
- AUG 08
- SEPT 12
- OCT 10
- NOV 14
- DEC 12

Meetings are held the third Monday of each month at 4 p.m. at the CDD Office, 2105 Harbor Lake Drive, unless otherwise noted.

Should you have any questions please contact the Association manager, Theresa Graeser at 904/278-0616 or by email: tgraeser@paracleteservicesllc.com.

Black Creek Community Email

Do you have a question for the Black Creek Association? Now you can email your questions to the association via the following community email address blackcreekHOA@aol.com. We will respond to your email within in 48 hrs of receipt.



Connect with Us!

Did you know? Eagle Harbor is on Facebook & Twitter! Connect with us and your neighbors on our official pages: www.Facebook.com/EagleHarborClub and www.Twitter.com/EagleHarborClub





**Clay County is expanding our Recycling program to accept more items:
(Effective Immediately)**



Items included in recycling program:

PAPER

- Mail, office and school papers
- Magazines and catalogs
- Shredded paper- should be placed in 13 gallon or smaller trash bags

- Corrugated cardboard- flattened and cut into pieces 2' x 3' or smaller
- Newspapers
- Paperback books & telephone books
- Fiberboard boxes – cereal, cracker and storage boxes

PLASTIC (#1-#7)

- Plastic beverage and food containers
- Detergent bottles

- CD's and CD cases
- Cleaning containers

GLASS

- Glass bottles and jars: green, brown and clear
- (Please place tops/lids in garbage. Labels do not need to be removed)

- CARTONS – food and beverage cartons including:
- Milk/creamer cartons
- Soup & broth cartons
- Juice boxes

METAL

- Beverage containers
- Steel and aluminum food containers

- Steel and aluminum cans
- Baking tins

Items NOT included in Recycling Program:

Plastic toys, plastic bags, clothes hangers, pizza boxes, motor oil containers, pool & other chemical containers, mirrors, window glass & broken glass, aerosol cans, electronics and pesticide containers.

Clay County residents are encouraged to recycle. Recycling conserves natural resources as well as helps lower the cost of waste disposal. All containers should be emptied rinsed clean. Place all recyclable materials in bins provided (one for paper products, one for plastic, glass & cans etc.) Do not place anything but recyclables in bins. Please place recycle bins curbside by 6:00 a.m. on service day.

www.advanceddisposal.com (904) 695-0500 • 1-866-779-CLAY (2529)

www.claycountygov.com (904) 284-6374 or (904) 269-6374 • Keystone 1-352-473-3711 x6374